

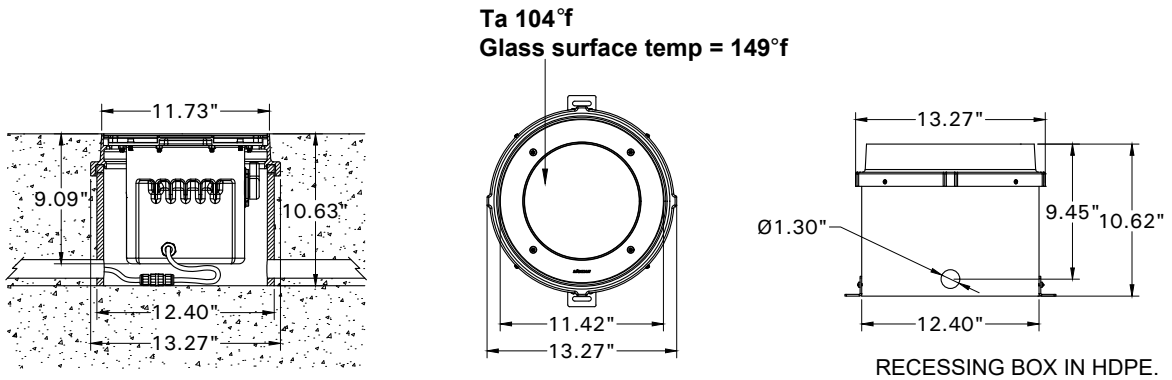
# INSTALLATION AND SERVICE MANUAL

**LIGMAN**  
NORTH AMERICA

For Installation of Melbourne 7 inground uplight + Accessories A614491.  
Model. UMEL-60061 and UMEL-60063

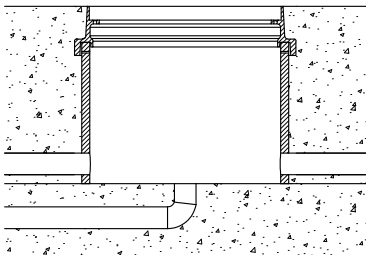
## Product drawing (dimensions)

SUITABLE FOR WET LOCATIONS

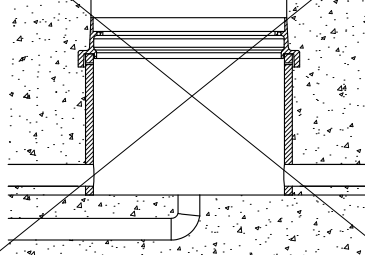


Static load resistance 5000 kg

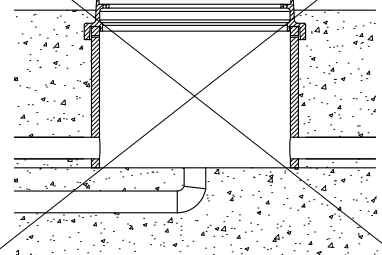
OK  
YES



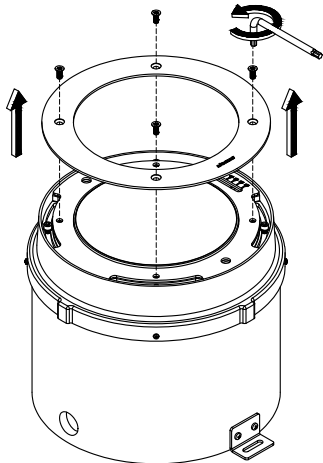
NO



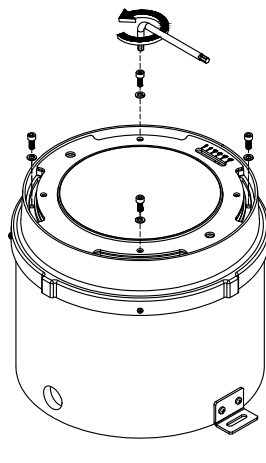
NO



①

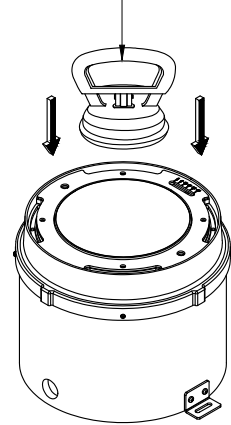


②



③

Accessories A614491 :  
Glass suction cup

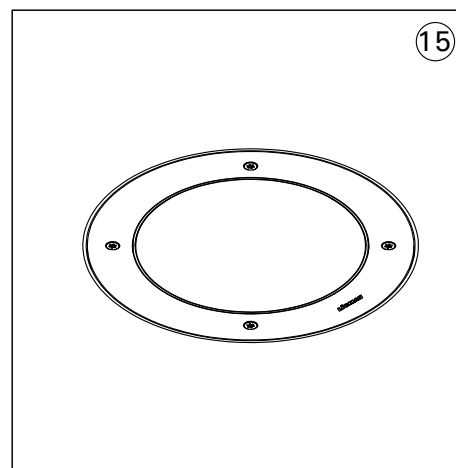
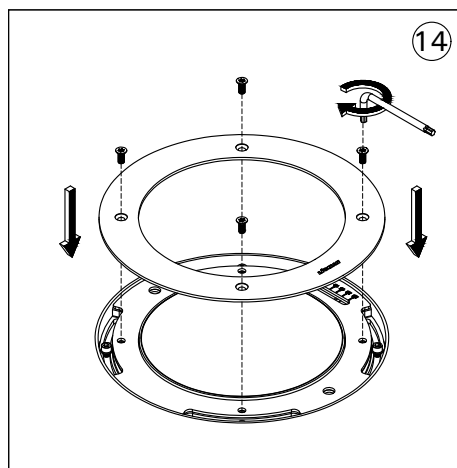
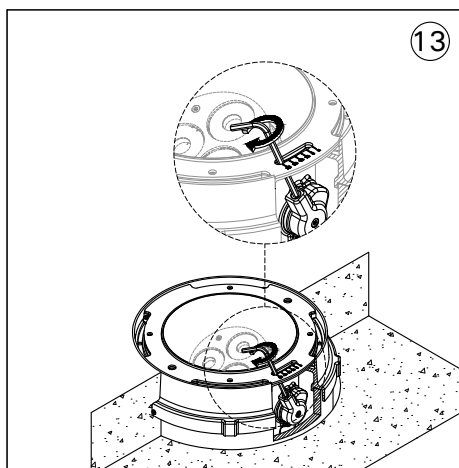
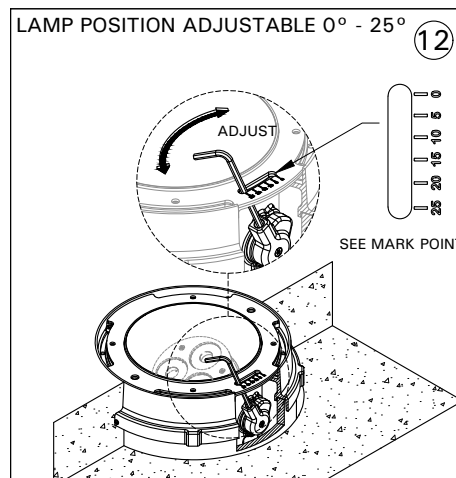
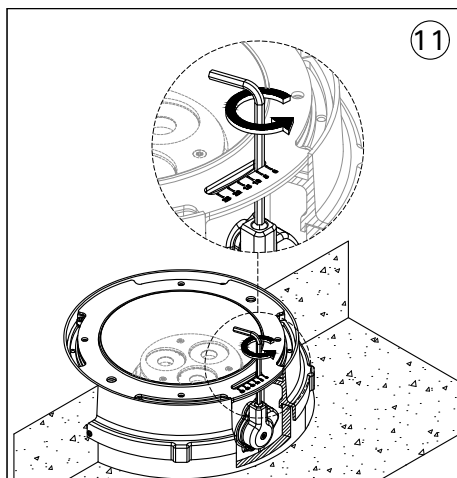
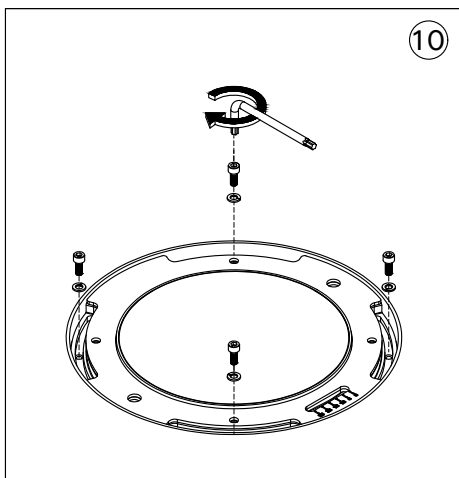
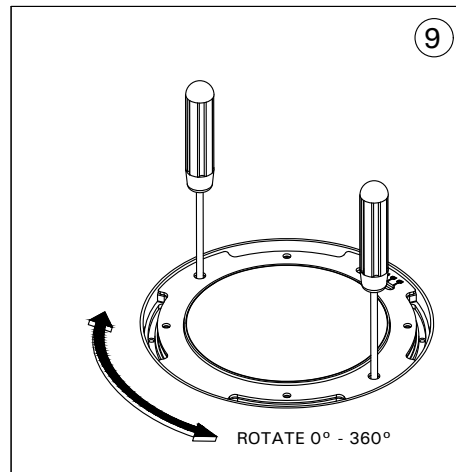
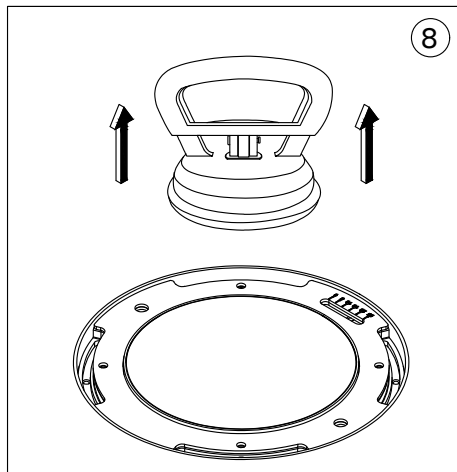
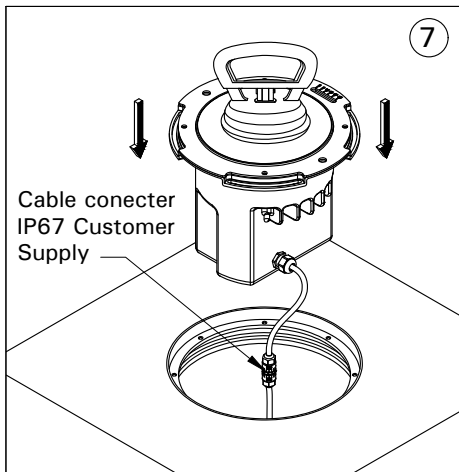
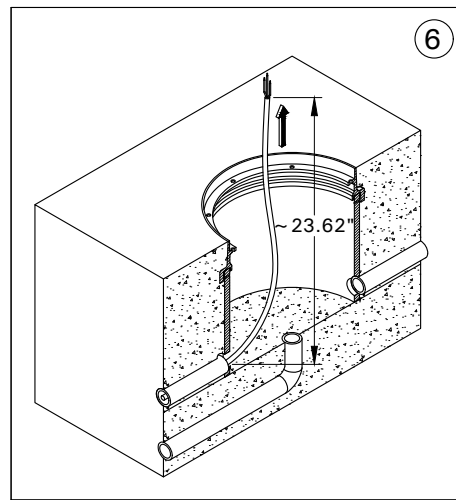
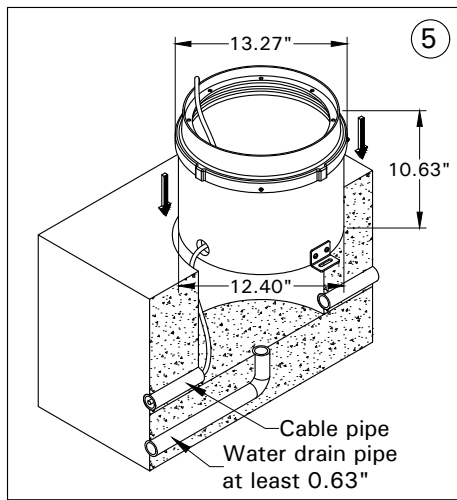
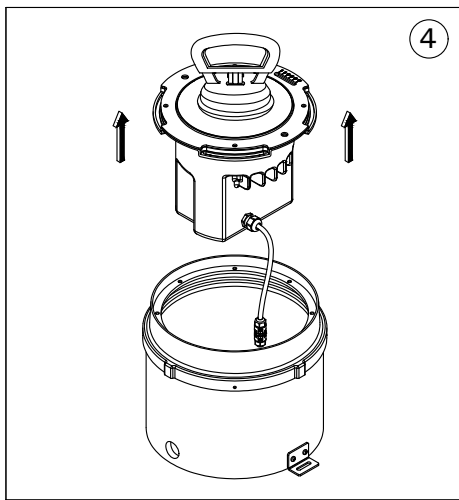


### Notice to installer :

**1.WIRING INSTRUCTIONS** Warning : RISK OF FIRE AND ELECTRICAL SHOCK. : FIXTURE MUST BE INSTALLED BY A QUALIFIED ELECTRICIAN ONLY>FIXTURE IS INTENDED FOR INSTALLATION IN ACCORDANCE WITH THE NATIONAL ELECTRICAL CODE, LOCAL AND FEDERAL CODE SPECIFICATIONS. DISCONNECT POWER BEFORE SERVICING.

**Ligman Lighting USA**

7144 NE Progress Court, Hillsboro  
Oregon, 97124, USA  
Tel : 503 645 0500



**Note : Brush finish stainless steel products requirement to wipe the product periodically with a light oil (WD40 or equivalent) to remove any staining.**